

EDUCATION

IN

Motion

MESSAGE FROM THE CEO

Alton Delane

With summer approaching and summer school programs starting to take shape, I can't think of a more fun and engaging way to recover and move ahead of learning losses than with SMALLab. During a recent customer feedback call, an administrator shared that one of her students joyfully exclaimed, "it's better than recess!" when asked about her recent time in SMALLab. It's not too late to get SMALLab installed in time for summer.

Speaking of feedback, we are looking for yours as well with our SMALLab feedback survey (*below*). Are there features you wish you had, new subjects you'd love to cover, and/or advanced activities to further challenge your students? If so, let us know so we can work them into our innovation pipeline for making SMALLab better than ever. Many exciting new features are already scheduled to be released just in time for the start of the 2022/23 school year.

IN THIS ISSUE

MESSAGE FROM THE CEO

UPCOMING EVENTS

NEW STANDARDS

SCENARIO GUIDES

RECENT INSTALLATIONS

IMPROVEMENT SURVEY



UPCOMING EVENTS AND TRAINING COURSES



WEBINAR SERIES

Join us in the fall as we kick off our embodied learning webinar series.



SMALLab 101

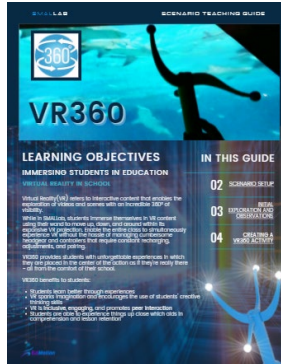
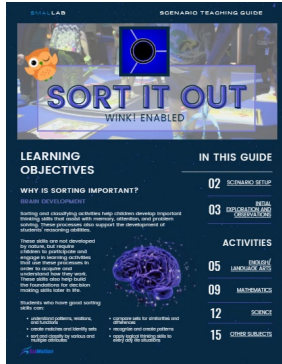
Learn the SMALLab basics with our virtual training course - SMALLab 101.

The SMALLab content library is growing!

SMALLab is adding Mississippi and North Carolina standards to our platform with more to follow this summer!



SMALLAB SCENARIO GUIDES



The EdMotion curriculum team is developing teaching guides for each of the 30+ SMALLab scenarios that are available to customers. Guides include getting started, learning objectives, tips and tricks, and suggested lessons and activities.

Check out recently published guides for Sort it Out and VR360 in the [SMALLab HowTo Center](#) and be on the lookout for Venn Diagrammer and Character Profile guides coming soon!

[Learn More](#)

NEW SMALLAB INSTALLATIONS

Congratulations to West Point and Aberdeen school districts on their recent SMALLab installations!



SOUTH SIDE ELEMENTARY
WEST CLAY ELEMENTARY
WEST POINT CONSOLIDATED SCHOOLS
West Point, MS



ABERDEEN HIGH SCHOOL
BELLE/SHIVERS MIDDLE SCHOOL
ABERDEEN SCHOOL DISTRICT
Aberdeen, MS



SMALLab IMPROVEMENT SURVEY

Plans are underway for a complete overhaul of SMALLab Resources including courses, activities, features, and assessments to best meet the needs our customers.

As a valued member of the SMALLab community, we'd be especially grateful if you'd take just 2 minutes to complete our *overhaulin'* survey! Thank you in advance.

[Take Survey](#)

CONTACT US

info@edmotionlearning.com
www.edmotionlearning.com
919.205.0625

FOLLOW US

